



# Office of General Services

DESIGN & CONSTRUCTION GROUP  
THE GOVERNOR NELSON A. ROCKEFELLER  
EMPIRE STATE PLAZA  
ALBANY, NY 12242

---

**ADDENDUM NO. 3 TO PROJECT NO. 47698  
ELECTRICAL WORK  
UPGRADE LIGHTING  
SHERIDAN HOLLOW PARKING FACILITY  
SHERIDAN AVENUE  
ALBANY, NY**

January 15, 2026

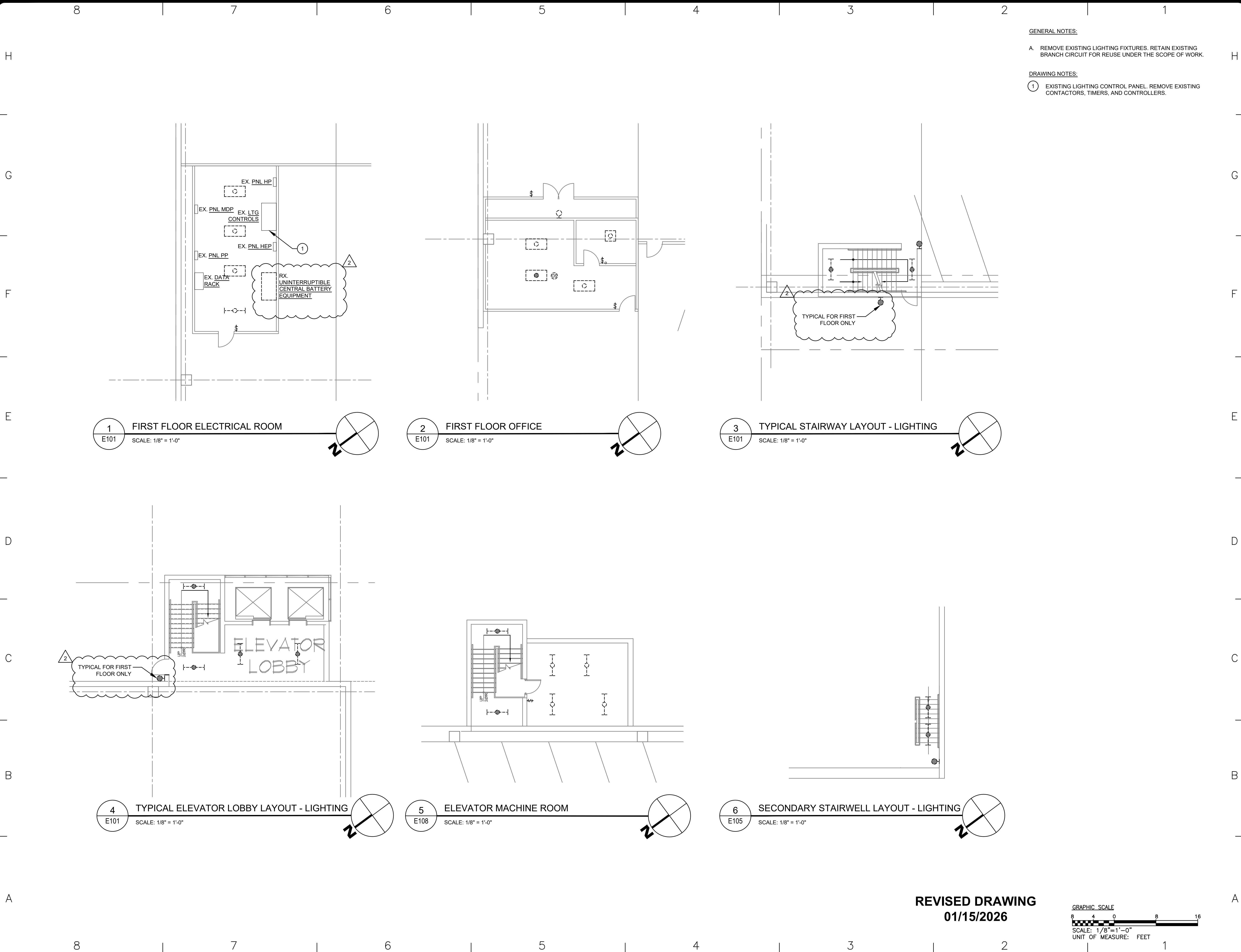
<p><b>NOTE:</b> This Addendum forms a part of the Contract Documents. Insert it in the Project Manual. Acknowledge receipt of this Addendum in the space provided on the Bid Form.</p>
--

## **DRAWINGS**

1. Revised Drawing:
  - a. Drawing No. E-401, noted Addendum 2 dated 01/15/2026, accompanies this Addendum and supersedes the same numbered previously issued drawing.
  - b. Drawing No. E-402, noted Addendum 2 dated 01/15/2026, accompanies this Addendum and supersedes the same numbered previously issued drawing.
  - c. Drawing No. E-501, noted Addendum 2 dated 01/15/2026, accompanies this Addendum and supersedes the same numbered previously issued drawing.

## **END OF ADDENDUM**

Brady M. Sherlock, P.E.  
Director, Division of Design  
Design & Construction



GENERAL NOTES:

A. REMOVE EXISTING LIGHTING FIXTURES. RETAIN EXISTING BRANCH CIRCUIT FOR REUSE UNDER THE SCOPE OF WORK.

DRAWING NOTES:

1 EXISTING LIGHTING CONTROL PANEL. REMOVE EXISTING CONTACTORS, TIMERS, AND CONTROLLERS.

**NEW YORK STATE OF OPPORTUNITY** | **Office of General Services**

DESIGN & CONSTRUCTION

CONSULTANT

CERTIFICATE OF AUTHORIZATION #: 018011

**rmf**

RMF ENGINEERING, INC.  
5520 RESEARCH PARK DRIVE  
SUITE 300  
BALTIMORE, MD 21228

**WARNING:**

THE ALTERATION OF THIS MATERIAL IN ANY WAY, UNLESS DONE UNDER THE DIRECTION OF A COMPARABLE PROFESSIONAL, I.E. ARCHITECT FOR AN ARCHITECT, ENGINEER FOR AN ENGINEER OR LANDSCAPE ARCHITECT FOR A LANDSCAPE ARCHITECT, IS A VIOLATION OF THE NEW YORK STATE EDUCATION LAW AND/OR REGULATIONS AND IS A CLASS 'A' MISDEMEANOR.

**NYS ENERGY CODE STATEMENT:**

I, UNDERSIGNED, DO HEREBY CERTIFY THAT TO THE BEST OF MY KNOWLEDGE, BELIEF, AND PROFESSIONAL JUDGEMENT, THE INFORMATION SHOWN ON THESE DRAWINGS AND SPECIFICATIONS BEARING MY SEAL COMPLIES WITH THE APPLICABLE REQUIREMENTS OF THE NEW YORK STATE 2020 ENERGY CONSERVATION CODE.

**UNIFORM CODE STATEMENT**

TO THE BEST OF THE REGISTERED DESIGN PROFESSIONAL'S KNOWLEDGE, BELIEF, AND PROFESSIONAL JUDGEMENT THESE PLANS AND/OR SPECIFICATIONS ARE IN COMPLIANCE WITH THE 2020 UNIFORM CODE.

REGISTRATION EXPIRES: 02-28-2026

CONTRACT: **ELECTRICAL**

TITLE: **UPGRADE LIGHTING**

LOCATION: **SHERIDAN HOLLOW GARAGE  
ALBANY, NY**

CLIENT: **OFFICE OF GENERAL SERVICES**

**FINAL SUBMISSION**

MARK	DATE	DESCRIPTION
2	01/15/2026	ADDENDUM 2
1	12/23/2025	ADDENDUM 1
	02-14-2025	FINAL SUBMISSION

PROJECT NUMBER: **47698-E**

DESIGNED BY: MGP

DRAWN BY: MGP

FIELD CHECK: JRG

APPROVED: JRG

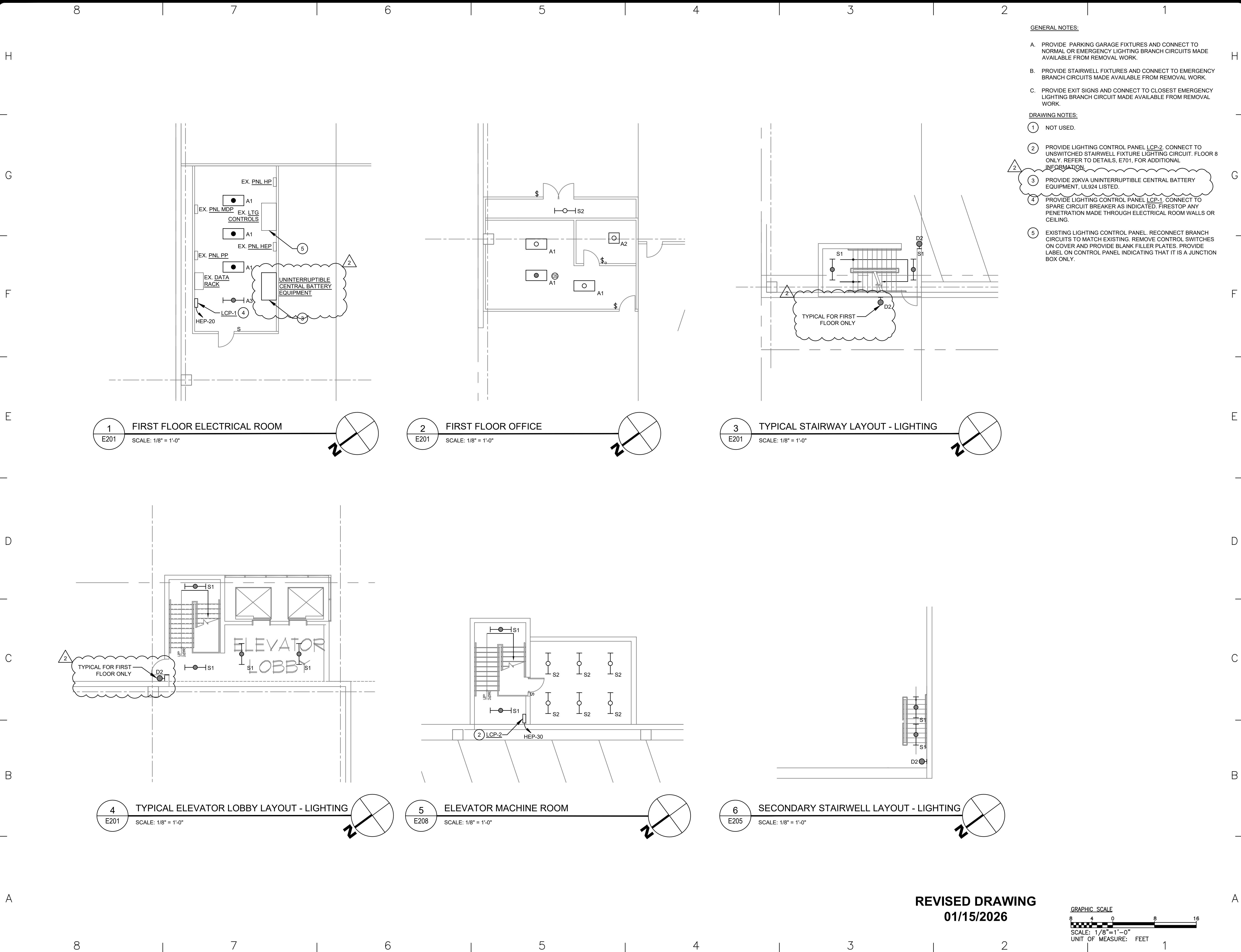
SHEET TITLE: **ENLARGED REMOVAL WORK PLANS**

DRAWING NUMBER: **E-401**

SHEET 19 OF 23

**REVISED DRAWING**  
**01/15/2026**

GRAPHIC SCALE  
SCALE: 1/8" = 1'-0"  
UNIT OF MEASURE: FEET



- GENERAL NOTES:
- A. PROVIDE PARKING GARAGE FIXTURES AND CONNECT TO NORMAL OR EMERGENCY LIGHTING BRANCH CIRCUITS MADE AVAILABLE FROM REMOVAL WORK.
  - B. PROVIDE STAIRWELL FIXTURES AND CONNECT TO EMERGENCY BRANCH CIRCUITS MADE AVAILABLE FROM REMOVAL WORK.
  - C. PROVIDE EXIT SIGNS AND CONNECT TO CLOSEST EMERGENCY LIGHTING BRANCH CIRCUIT MADE AVAILABLE FROM REMOVAL WORK.
- DRAWING NOTES:
- 1 NOT USED.
  - 2 PROVIDE LIGHTING CONTROL PANEL LCP-2. CONNECT TO UNSWITCHED STAIRWELL FIXTURE LIGHTING CIRCUIT. FLOOR 8 ONLY. REFER TO DETAILS, E701, FOR ADDITIONAL INFORMATION.
  - 3 PROVIDE 20KVA UNINTERRUPTIBLE CENTRAL BATTERY EQUIPMENT, UL924 LISTED.
  - 4 PROVIDE LIGHTING CONTROL PANEL LCP-1. CONNECT TO SPARE CIRCUIT BREAKER AS INDICATED. FIRESTOP ANY PENETRATION MADE THROUGH ELECTRICAL ROOM WALLS OR CEILING.
  - 5 EXISTING LIGHTING CONTROL PANEL. RECONNECT BRANCH CIRCUITS TO MATCH EXISTING. REMOVE CONTROL SWITCHES ON COVER AND PROVIDE BLANK FILLER PLATES. PROVIDE LABEL ON CONTROL PANEL INDICATING THAT IT IS A JUNCTION BOX ONLY.



DESIGN & CONSTRUCTION

CONSULTANT  
CERTIFICATE OF AUTHORIZATION #: 018011



RMF ENGINEERING, INC.  
5520 RESEARCH PARK DRIVE  
SUITE 300  
BALTIMORE, MD 21228

WARNING:  
THE ALTERATION OF THIS MATERIAL IN ANY WAY, UNLESS DONE UNDER THE DIRECTION OF A COMPARABLE PROFESSIONAL, I.E. ARCHITECT FOR AN ARCHITECT, ENGINEER FOR AN ENGINEER OR LANDSCAPE ARCHITECT FOR A LANDSCAPE ARCHITECT, IS A VIOLATION OF THE NEW YORK STATE EDUCATION LAW AND/OR REGULATIONS AND IS A CLASS 'A' MISDEMEANOR.

NYS ENERGY CODE STATEMENT:  
I, UNDERSIGNED, DO HEREBY CERTIFY THAT TO THE BEST OF MY KNOWLEDGE, BELIEF, AND PROFESSIONAL JUDGEMENT, THE INFORMATION SHOWN ON THESE DRAWINGS AND SPECIFICATIONS BEARING MY SEAL COMPLIES WITH THE APPLICABLE REQUIREMENTS OF THE NEW YORK STATE 2020 ENERGY CONSERVATION CODE.

UNIFORM CODE STATEMENT  
TO THE BEST OF THE REGISTERED DESIGN PROFESSIONAL'S KNOWLEDGE, BELIEF, AND PROFESSIONAL JUDGEMENT, THESE PLANS AND/OR SPECIFICATIONS ARE IN COMPLIANCE WITH THE 2020 UNIFORM CODE.



REGISTRATION EXPIRES:  
02-28-2026

CONTRACT: **ELECTRICAL**

TITLE:  
**UPGRADE LIGHTING**

LOCATION:  
**SHERIDAN HOLLOW GARAGE  
ALBANY, NY**

CLIENT:  
**OFFICE OF GENERAL SERVICES**

**FINAL SUBMISSION**

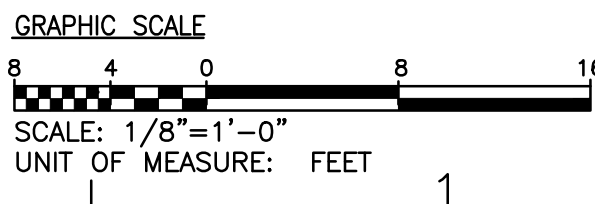
2	01/15/2026	ADDENDUM 2
1	12/23/2025	ADDENDUM 1
	02-14-2025	FINAL SUBMISSION
MARK	DATE	DESCRIPTION
PROJECT NUMBER:	47698-E	
DESIGNED BY:	MGP	
DRAWN BY:	MGP	
FIELD CHECK:	JRG	
APPROVED:	JRG	

SHEET TITLE:  
**ENLARGED LIGHTING PLANS**

DRAWING NUMBER:  
**E-402**

SHEET 20 OF 23

REVISED DRAWING  
01/15/2026



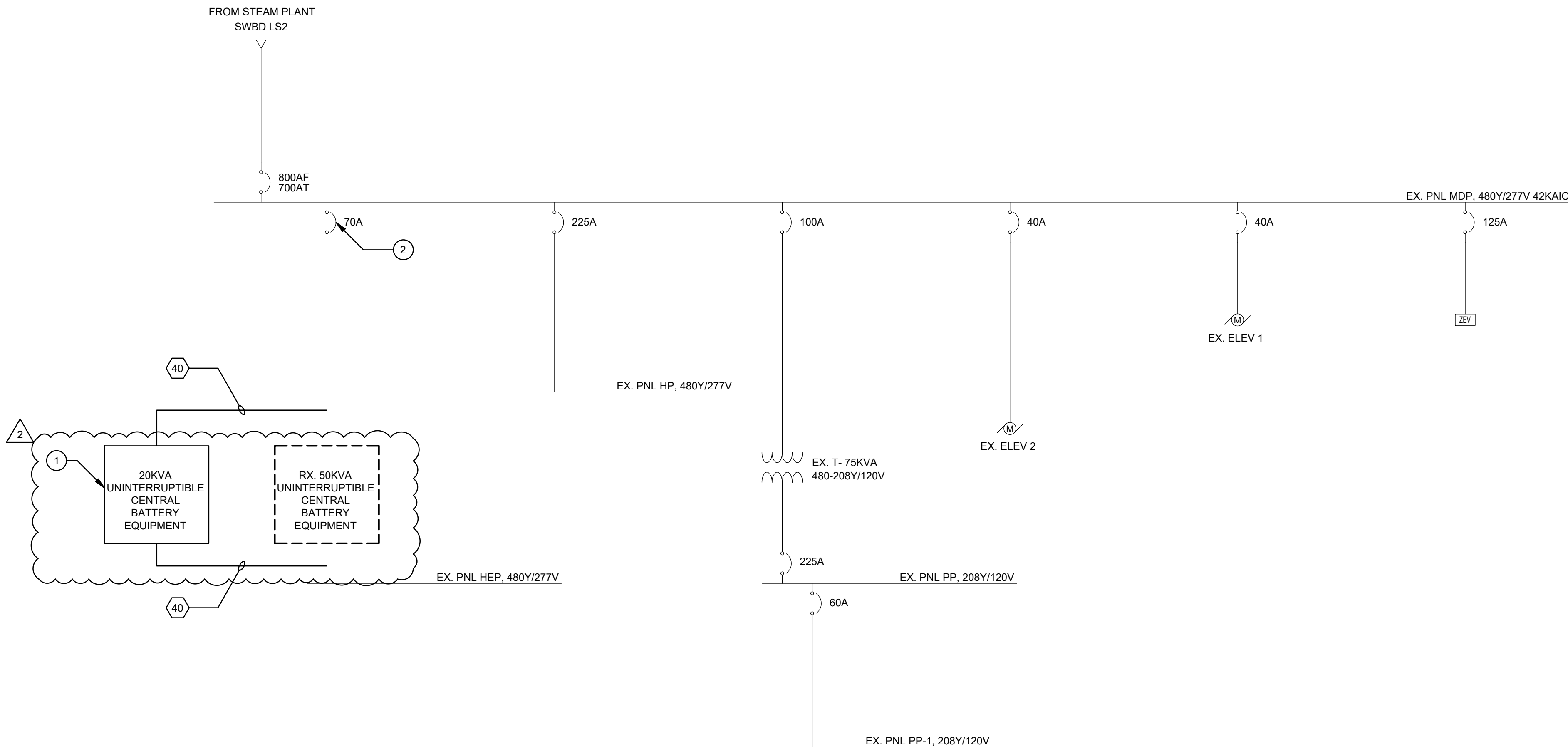


PANEL NO.: EX. PNL MDP		PROJECT: SHERIDAN HOLLOW GARAGE	
USAGE: DISTRIBUTION		CLIENT: OGS	
LOCATION: ELECTRICAL ROOM		MOUNTING: SURFACE	
PHASES: 3		PANEL TYPE: BUS DUCT	
L-L VOLTS: 480V		ENGINEER: MGP	
L-G VOLTS: 277V		RMF PROJECT NO.: 01220196-AA	
BUS AMPS: 1200A		FED FROM: SWBD LS2	
MAIN CB AMPS: 700A			
AIC RATING: 42,000			

CIRCUIT					LOAD AMPS	DESCRIPTION	NOTES	BREAKER		NOTES	DESCRIPTION	LOAD AMPS	CIRCUIT				
SETS	WIRE	NEUT.	GND.	COND.				POLE	AMP.				SETS	WIRE	NEUT.	GND.	COND.
					0.0	SPACE		3				0.0	1	#1	#1	#6	1-1/2"
					0.0							0.0					
					0.0							0.0					
1	#8	#8	#10	3/4"	0.0	ELEVATOR #1		3	40			0.0	1	#1	#1	#8	1-1/2"
					0.0							0.0					
					0.0							0.0					
1	#8	#8	#10	3/4"	0.0	ELEVATOR #2		3	40			0.0	1	#1	#1	#8	1-1/2"
					0.0							0.0					
					0.0							0.0					
1	#1	#1	#8	1-1/2"	0.0	PANEL PP		3	100			0.0	1	#8	#8	#10	3/4"
					0.0							0.0					
					0.0							0.0					
1	#4/0	#4/0	#4	2-1/2"	0.0	PANEL HP		3	225			0.0					
					0.0							0.0					
					0.0							0.0					

LOAD SUMMARY	CON. KVA	%	DEM. KVA
RECEPTACLES	0	code	0
MOTORS	0	100%	0
LIGHTS (INT.)	0	125%	0
LIGHTS (EXT.)	0	125%	0
HVAC (HEAT)	0	100%	0
HVAC (COOL)	0	100%	0
VENTILATION	0	100%	0
KITCHEN	0	65%	0
EMERGENCY	0	100%	0
MISC.	0	100%	0
FUTURE	0	100%	0
OTHER	0	100%	0
EXISTING	0	125%	0
LARGEST MTR	0	25%	0
TOTAL KVA	0 KVA		0 KVA
TOTAL AMPS	0 AMPS		0 AMPS

PANEL NOTES:  
1 REPLACE EXISTING 70A TRIP UNIT WITH 40A TRIP UNIT COMPATIBLE WITH EXISTING GE SPECTRA SERIES BREAKER



1 SINGLE-LINE DIAGRAM  
E501 SCALE: NONE

REVISED DRAWING  
01/15/2026

FEEDER SCHEDULE	
DESIGNATION	FEEDER SIZE
40	3/4" C. W/ 4 #8 + 1 #10 GRD

- DRAWING NOTES:
- 1 PROVIDE UNINTERRUPTIBLE CENTRAL BATTERY EQUIPMENT 480Y/277 INPUT 480Y/277 OUTPUT MAINTENANCE BYPASS SELF TESTING WEB INTERFACE FOR REMOTE MONITORING.
  - 2 REPLACE 70A TRIP UNIT WITH A 40A GE SPECTRA SERIES.



DESIGN & CONSTRUCTION

CONSULTANT

CERTIFICATE OF AUTHORIZATION #: 018011



RMF ENGINEERING, INC.  
5520 RESEARCH PARK DRIVE  
SUITE 300  
BALTIMORE, MD 21228

WARNING:

THE ALTERATION OF THIS MATERIAL IN ANY WAY, UNLESS DONE UNDER THE DIRECTION OF A COMPARABLE PROFESSIONAL, I.E. ARCHITECT FOR AN ARCHITECT, ENGINEER FOR AN ENGINEER OR LANDSCAPE ARCHITECT FOR A LANDSCAPE ARCHITECT, IS A VIOLATION OF THE NEW YORK STATE EDUCATION LAW AND/OR REGULATIONS AND IS A CLASS 'A' MISDEMEANOR.

NYS ENERGY CODE STATEMENT:

I, UNDERSIGNED, DO HEREBY CERTIFY THAT TO THE BEST OF MY KNOWLEDGE, BELIEF, AND PROFESSIONAL JUDGEMENT, THE INFORMATION SHOWN ON THESE DRAWINGS AND SPECIFICATIONS BEARING MY SEAL COMPLIES WITH THE APPLICABLE REQUIREMENTS OF THE NEW YORK STATE 2020 ENERGY CONSERVATION CODE.

UNIFORM CODE STATEMENT

TO THE BEST OF THE REGISTERED DESIGN PROFESSIONAL'S KNOWLEDGE, BELIEF, AND PROFESSIONAL JUDGEMENT, THESE PLANS AND/OR SPECIFICATIONS ARE IN COMPLIANCE WITH THE 2020 UNIFORM CODE.



REGISTRATION EXPIRES:  
02-28-2026

CONTRACT: ELECTRICAL

TITLE:  
UPGRADE LIGHTING

LOCATION:  
SHERIDAN HOLLOW GARAGE  
ALBANY, NY

CLIENT:  
OFFICE OF GENERAL SERVICES

FINAL SUBMISSION

2	01/15/2026	ADDENDUM 2
	02-14-2025	FINAL SUBMISSION
MARK	DATE	DESCRIPTION
PROJECT NUMBER:	47698-E	
DESIGNED BY:	MGP	
DRAWN BY:	MGP	
FIELD CHECK:	JRG	
APPROVED:	JRG	

SHEET TITLE:

SINGLE-LINE DIAGRAM

DRAWING NUMBER:

E-501

SHEET 21 OF 23